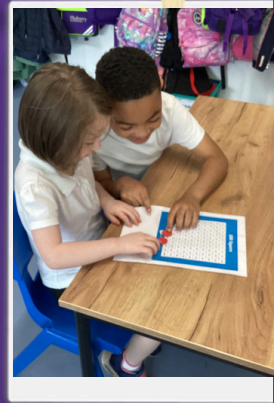


# NEWS CORNER

The latest news and information about  
Mulberry Wood Wharf Primary.



Friday 27<sup>th</sup> June 2025

## Sarah Jane's reflection of the week

This week at Wood Wharf, we've been focusing on a very important life skill: resilience. We've been exploring what it means to keep going when things feel tricky, to bounce back after a setback, and to believe that challenges help us grow. Central to this has been our work on growth mindset, and in particular, the power of one small but mighty word... "yet."

In our assembly, we talked about how adding "yet" to the end of a sentence can change everything. "I can't do this... yet" opens the door to possibility, hope, and perseverance. I encourage you to try it at home or with friends, when you hear someone say they can't do something or aren't good at something, smile and gently say: "yet." It's such a simple word, but it holds the power to transform how we see ourselves and our abilities.

On Friday, we had the absolute delight of welcoming our friends Jane and Tom from the Canary Wharf Group to our celebration assembly. They joined in with the singing of our very special Mulberry Wood Wharf song, and afterwards, I had the joy of showing them around the school. As always, I was bursting with pride as our children showcased their kindness, determination, and confidence in every classroom.

We've also been lucky to host some fantastic Year 10 students from Mulberry School for Girls this week as part of their work experience. I can honestly say, they've been phenomenal! Their energy, maturity, and support for both pupils and teachers have been such an asset. If I could, I'd offer them a job right now! We hope we've inspired them to consider a future in education and that they'll carry a little piece of Mulberry Wood Wharf with them wherever they go.

Wishing you a restful and joyful weekend. I'm hoping to take a stroll down the South Bank with Aspen, she loves the park (and the merry-go-round!). I've also spotted an exhibition at the Southbank Centre all about immersive play using recyclable materials, it might be the perfect spot to cool off and get inspired!

# Tiger Class & Blue Whale Class

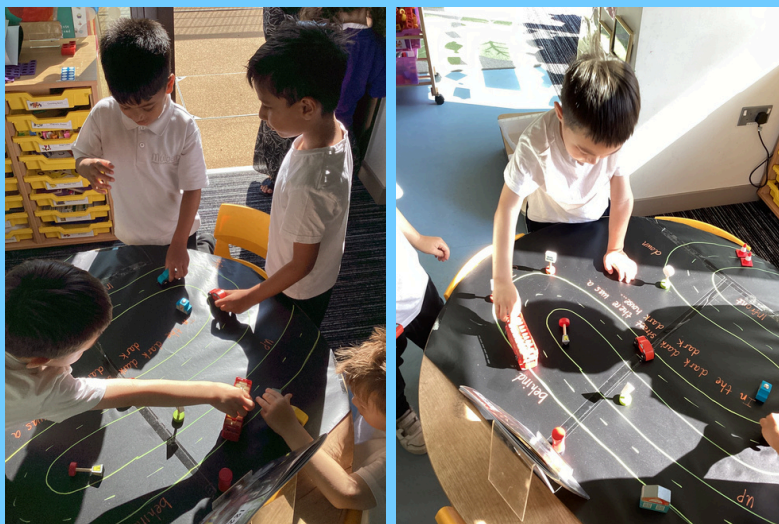


What a fantastic and busy week it's been in Blue Whale and Tiger Class! The children have been diving into the wonderful world of stories by Anthony Browne, reading *My Mum and My Dad*. These heartfelt books sparked thoughtful discussions about all the things the children love about their own loved ones. It was lovely to see how naturally the children shared their thoughts and feelings. They used these ideas to inspire their Big Write, where they practised using capital letters, finger spaces, and full stops to write about the special people in their lives.

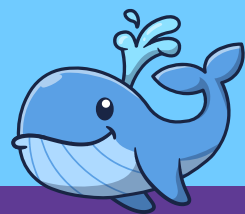
## REMINDER

**Please check your Ping messages for more details about our upcoming trip to Chalkwell Beach on Tuesday, 1st July.**

In maths, the children have been learning all about mapping. They've been busy creating their own maps showing the journey they take to school. It was wonderful to see the connections they made, noticing shared landmarks such as the blue bridge or the local park along the way.



The children also took part in a creative art project, drawing portraits of their mums or dads. With great care and attention to detail, they carefully sketched each feature. They were so proud to see their finished portraits come to life!



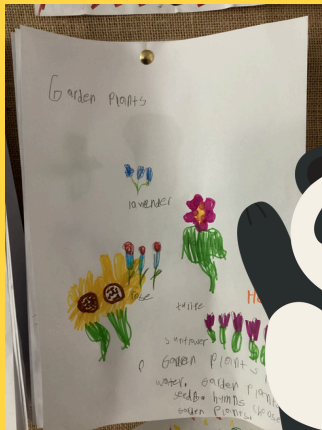
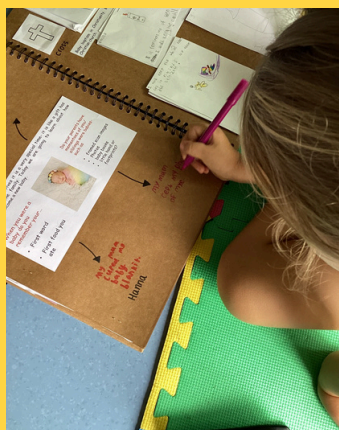


# Lion Class & Panda Class



This week in Maths Lion class have been using the greater than ( $>$ ) and less than ( $<$ ) symbols to compare numbers from 50 to 100. Children are learning to spot the bigger tens digit first, then the ones, to decide which symbol belongs where. They are understanding that the number with more tens is the greater number. We have been reading aloud sentences such as "73  $>$  56" building both number sense and confidence. It would be great if you can continue to practise this skill at home.

In Science Lion class continued creating their own non fiction books about plants and flowers. This week we have been exploring the names of different garden plants and documenting their key characteristics. The children's enthusiasm for learning plant vocabulary and science concepts shines through in every page. We can't wait to share their beautifully illustrated book with you!



Panda class learned about Tim Peake, a significant individual in history known for being the first British astronaut to visit the International Space Station. Pupils were thrilled and inspired to learn that during his spacewalk he contacted school children and communicated with them. Lots of Panda Class children are excited and feel inspired to dream big and have big ambitions.

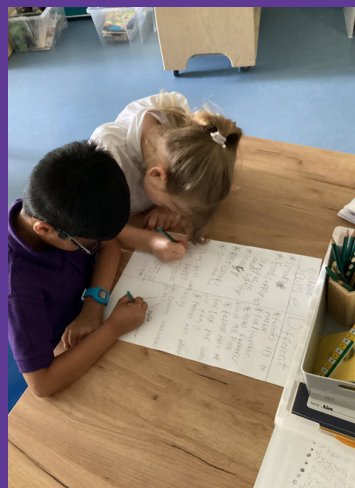
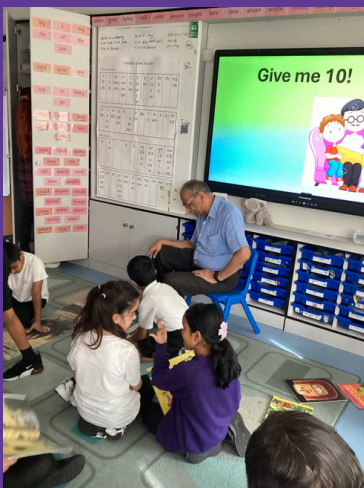
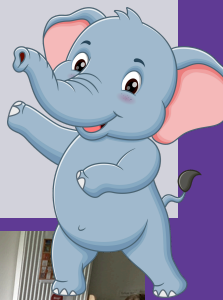
As part of their English lessons, the children have started to write their own adventure stories. They focused on using the correct tense to describe events and ensured their letter formation was accurate and neat. The confidence and resilience in pupils is blossoming every lesson and it's wonderful to see them enhance their writing skills and creativity. In Panda Class, children are learning to recognise and name different coins in Maths. They enjoyed exploring real and toy coins, sorting them by size, colour, and value. The class practised matching coins to their values using fun games and role-play activities like shopkeeping. Through hands-on learning, the pandas are becoming confident in identifying 1p, 2p, 5p, 10p, 20p, 50p, £1 and £2.

# Elephant Class



This week, we successfully completed the paper mâché stage of our art unit. After carefully shaping and drying our creations, we moved on to the next step: covering them with a vibrant layer of coloured paper. This not only added visual interest and personality to each piece, but also helped to strengthen and smooth the surface in preparation for any final decorative touches. Which we aim to complete next week, elephant class worked so hard on this showing resilience and working with more focus as well.

In science, we have been revisiting our learning about plants. We have explored how seeds and bulbs grow into mature plants and what they need to stay healthy, such as water, light, and the right temperature with excellent knowledge the children have been creating their own organisers with information about this. We have observed how plants change over time and talked about what might happen if they do not get what they need. This has helped us understand the life cycle of a plant and how to care for living things in our environment.





# star of the week

Value of the week:

**RESILIENCE**

NOAH

FOR DEMONSTRATING RESILIENCE IN HIS BIG WRITE EVEN THOUGH HE FOUND IT CHALLENGING



ERATO

FOR SHOWING GREAT RESILIENCE BY LEARNING FROM HER MISTAKE AND TRYING AGAIN



GEORGE:

FOR ALWAYS THINKING OUTSIDE THE BOX AND BRINGING A CREATIVE FLAIR TO EVERYTHING HE DOES.

LUKE:

FOR ALWAYS SHOWING OUTSTANDING CREATIVITY IN HIS IDEAS AND DRAWINGS.

ASHVIK:

FOR SHOWING RESILIENCE BY TRYING TO LEARN A NEW SKILL IN PE.

AARAV:

FOR STAYING FOCUSED AND COMPLETING LOTS OF LEARNING ACTIVITIES WITH DETERMINATION.

ADI

FOR MAINTAINING A POSITIVE ATTITUDE AND ENCOURAGING OTHERS TO MAKE THE APPROPRIATE CHOICE.

MIA

FOR APPLYING HERSELF TO IMPROVE HER WRITING ESPECIALLY TO RE-READ HER OWN WRITING TO MAKE IMPROVEMENTS.

MALCOLM

SHOWS RESILIENCE BY NOT GIVING UP, EVEN WHEN SOME TASKS SEEM CHALLENGING.



AILA

FOR STAYING FOCUSED AND SHOWING A POSITIVE ATTITUDE, EVEN WHEN THINGS GET A BIT TRICKY — A GREAT EXAMPLE OF RESILIENCE IN ACTION.



# ATTENDANCE!

Mon

Tue

Wed

Thu

Fri

**ELEPHANT CLASS**



**LION CLASS, PANDA CLASS,  
TIGER CLASS**



**BLUE WHALE CLASS**



## Dates for your DIARY

- 30.06.25 – School closed for INSET day
- 01.07.25 – Reception offsite visit
- 02.07.25 – Preesha leading musical instrument concert at 9:15am
- 04.07.25 - Year 2 offsite visit
- 07.07.25 – Conor leading musical instrument concert at 9:15am
- 08.07.25 – Sports Day (see flyers reception – am and KS1 PM)
- 11.07.25 - Year 1 offsite visit
- 14.07.25 - End of year school reports sent to families
- 15.07.25 – KS1 Summer Show (two performances: 9:30am and 2:30pm)
- 16.07.25 – Meet the New Teacher
- 17.07.25 – Reception Graduation (morning)
- 18.07.25 – School Fete – school will close at 2:00pm (no clubs and no wraparound care)
- 22.07.25 – School closes at 1:00pm for the summer holidays

**GOLD – 97+  
SILVER – 95 – 97%  
BRONZE – 90–95%**

**Family celebration/party Looking ahead:**

01–02.09.25 – INSET days for staff (school closed to pupils)

03.09.25 – Pupils return to school; wraparound care resumes

September – Meet the Teacher sessions for parents (dates and times to be confirmed)

22.09.25 – School clubs begin



# What's going on at MWW?



# Summer Fete

Mulberry  
Wood Wharf Primary

£2  
ENTRY\*

UP TO 4 FAMILY MEMBERS  
ALL PROCEEDS GO TO MULBERRY  
FOUNDATION FOR WOOD WHARF  
PRIMARY

MULBERRY WOOD WHARF PRIMARY

## SUMMER FETE

- FRIDAY 18TH JULY 2025 -

FROM  
3 PM  
TO 5 PM

BOUNCY CASTLE  
ICE CREAM  
HOOK-A-DUCK  
FOOTBALL SHOOT-OUT  
FACE PAINT  
BAKE SALE  
AND MANY MORE!

FUN FOR ALL THE FAMILY!

CASHLESS PAYMENTS ACCEPTED - SECURE YOUR TOKENS IN ADVANCE!



Mulberry  
Wood Wharf Primary

VENUE: MULBERRY WOOD WHARF SCHOOL, 20 BRANNAN STREET, LONDON, E14 9ZR  
FOR MORE INFORMATION PLEASE CALL: 0208 713 0183

## Reminder!

Don't forget to  
donate raffle  
prizes if you have  
some to give....

Raffle prizes so far:

1. A week of summer camp with Premier Education
2. An adult or child dance class with Effy from connect with yourself
3. In2Sports voucher
4. A toasted sandwich maker
5. A 30 pound voucher from Farmer Js

+ many more....