

# NEWS CORNER

The latest news and information about  
Mulberry Wood Wharf Primary.



## Sarah Jane's reflection on the week...

This week, I shared with you the outcome of our recent Ofsted visit. While external evaluations are part of school life, what matters most to us, and what has always driven our work — is doing the very best for the children we serve every day.

We were delighted that the inspection reflected the things we already know and are proud of at Mulberry Wood Wharf. The team saw the care, ambition and dedication that underpin everything we do. They spoke of our children thriving, of the strong, respectful relationships in our school, and of the inclusive, nurturing environment we've worked hard to create together.

They highlighted that pupils learn an ambitious, well-sequenced curriculum and that staff identify and respond quickly when support is needed. They recognised that our children are taught to be creative, resilient and respectful, and that they feel seen, valued and heard.

We know how special our school is because we live it every day. This recognition is simply a reflection of the commitment, care and teamwork of everyone in our community, our children, our staff and you, our parents and carers.

We're excited about what's ahead, especially as we continue to grow into Key Stage 2 with more wonderful teachers joining us. We remain focused on what truly matters: building a joyful, ambitious and inclusive school where children love learning and feel a deep sense of belonging.

20<sup>th</sup> June 2025

Thank you for the many kind messages you've shared, the warm words at the gate, and the small gestures (yes, even a tin of biscuits!) that have meant so much. Kindness, one of our core values, has been so present, and we're grateful for it.

With temperatures rising in London this week, it's important to keep children cool, hydrated and protected from the sun. Don't forget water bottles, sun hats and sunscreen if you're out and about this weekend.

If you're looking for ways to stay cool and have fun, there are some great local splash parks and water play areas to explore. A few family favourites include:

**Victoria Park Splash Pad (Tower Hamlets)** – A lovely water play area and large green space to enjoy a picnic.

**Thames Barrier Park (Newham)** – Fountains, shaded areas and views of the river.

**Clissold Park Splash Zone (Hackney)** – A popular spot with a paddling pool and play area.

**Mudchute Farm & Park** – While not a splash park, it's a shaded, breezy space with animals and open green areas perfect for escaping the heat.

Wherever you go, keep cool, drink plenty of water and enjoy the sunshine safely!

# Blue Whale and Tiger Class have been learning...

This week in Tiger class, the children have been excited to continue learning about a story featuring our namesake animal – The Tiger Who Came to Tea! We have been having conversations about the story and how the different characters act in it, while also beginning to think about the differences between the time the book was written and our own time. We developed our questioning language and thought about the purpose of questions, which came in very handy when we were visited by the Tiger themselves, who kindly fielded our varied and thoughtful questions. Great job Tiger class!

In Maths, we have been working on patterns, both in identifying the repeating rule of the pattern and in making patterns of our own using the resources around our environment.

Another big focus of the week has been the heat, and how to beat it! We have had some fantastic conversations regarding the exciting new air conditioning unit in our room, including what the possible purpose of adding water might be. Speaking of water, the water tray has become even more popular this week, as we experiment with the water temperature as it changes throughout the day. Our den making outside, in addition to being the fun group activity it always is, has also taken on the function of providing some much-appreciated shelter from the sun!

This week in Blue whale class, the children have been very busy engaging in a variety of activities. They particularly enjoyed role-playing as police officers—dressing up in uniforms and learning all about the important responsibilities police have in keeping our community safe. This imaginative play sparked lots of curiosity and conversation about how officers help people every day. In addition to this, the children had great fun with the marble run, constructing a range of intricate obstacles and eagerly watching the marbles race to the finish. Another popular activity involved our car wash, where the children worked hard to scrub off the dirt and reveal hidden numbers underneath—combining play with number recognition in a fun and interactive way.

In maths, the children have been learning all about positional language—exploring words like "under," "next to," "behind," and "in front of" to describe where objects are. It has been wonderful to hear them naturally including positional language in their everyday conversations and play. Their growing confidence in this area has been clear to see!

Lastly, as a Father's Day celebration, the children also made special lollies—each one handmade with love and care. This thoughtful activity gave the children a chance to get creative and show appreciation for someone they love. The sweet treats made for a much-deserved Monday delight.





## Elephant Class have been learning...

This week, in Art we used papier-mâché to make our fish structures more solid before decorating them. The children dipped strips of newspaper into a glue mixture and carefully layered them onto their structures. We focused on strengthening the shapes and adding fine details to bring them to life.

In geography, we took our learning outdoors and focused on developing our map sketching skills. The children explored the school grounds and surrounding area, observing key features such as buildings, pathways, trees, and playground equipment. Using their books and pencils, they carefully sketched their own maps, paying attention to scale, position, and discussed close landmarks. We discussed the importance of direction and used simple symbols and keys to represent different elements. The activity helped reinforce spatial awareness and gave the children a real-world context for their mapping skills.





# Panda and Lion Class have been learning

This week in English, Lion class continued to be inspired by the story 'we're going to find the monster.' We innovated parts of the story to produce our own idea of events. For example, instead of Marcus being a monster, Siyuan drew Dad turning into a dinosaur. Stella drew Mum turning into a spider. We also created our own magical lands that our characters could go through. We had lots of imaginative ideas such as 'a rainbow cave, volcano erupting, magical castles, candy land and a tunnel.' We used adjectives to describe our magical lands. Next week we will begin to put all of our ideas together to plan and write a narrative.

In Maths we have been focusing on numbers 50-100, learning to recognise numbers, finding one more and less and counting forwards and backwards from a given number. Lion class have been using practical resources such as base 10 to create the numbers and work out how many tens and ones are in a number.

In Science this week, we learnt about Bernard Harris Jr and his achievements. We learnt that he was the first African American astronaut to perform a space walk, and he completed 129 orbits of the earth- wow! Lion class are gaining so much inspiration from this History unit of learning based on significant people, we can't wait to see who the next person is!

In Panda Class, pupils had a fantastic week exploring the PSHE theme "Changing Me." They reflected on how their skills have developed from birth to six years old, discussing milestones such as crawling, walking, speaking, and learning to write. This helped them understand how much they've grown and how change is a natural and positive part of life.

In English, the pupils were inspired by the adventure story *We're Going to Find a Monster* by Dapo Adeola. They used the story as a springboard to plan their own imaginative narratives, thinking carefully about characters, settings, and exciting plot twists. This encouraged creativity and helped them practise structuring their ideas clearly. We will start writing our stories next week.

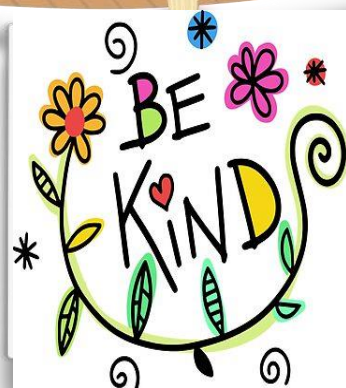
In Maths, Panda Class focused on place value to 100 and partitioning numbers into tens and ones. Through practical activities and games, they built confidence in understanding how numbers are made and how to break them down to solve problems.

It is wonderful to pupils deepening their understanding of themselves and their personal growth. Thank you to all grown ups for sharing baby photo, there is still time you share one baby photo of your child to our admin email.



# Star of the Week

Value of the week:  
**KINDNESS**



## Blue Whale:

Irie: For taking care of her environment and showing kindness by following the classroom charter.

Samirah: For sharing her infectious smile and kindness to others.

## Tiger Class:

Ege: For being a kind friend and including others in his play

Khaled: For always showing kindness to his peers and teachers

## Panda Class:

Baishi for sharing his love for local plants and explaining his discoveries during his home learning.

Nephi for trying his best to improve the choices he makes in order to demonstrate choosing Kindness.

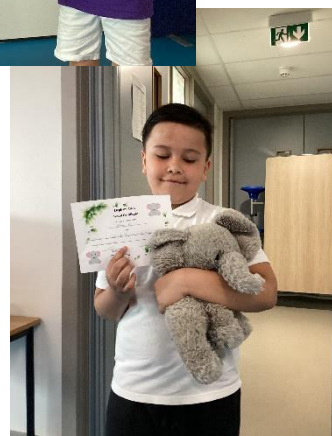
## Lion Class:

Raphael: for using words 'please' and 'thank you' demonstrating kindness.

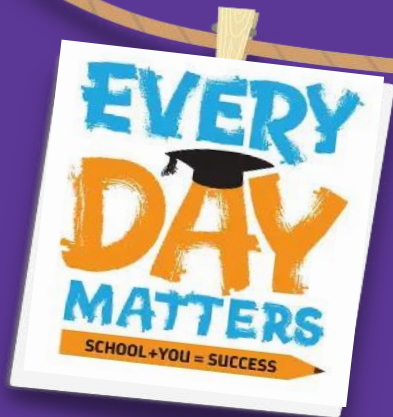
Lalani: For sharing classroom resources by taking turns beautifully.

## Elephant Class:

Madina and Adam  
For both showing kindness and being helpful in taking care of the class environment, they offered to tidy up.







# Attendance

**Our GOLD Class Attendance** are our classes who have 97+ attendance for a whole week

**Our SILVER Class Attendance** are our classes who have 95-97% attendance for a whole week

**Our BRONZE Class Attendance** are our classes who have 90-95% attendance for a whole week.

**Blue Whale – Keep trying!**

**Panda – 95%**

**Tiger – 94%**

**Elephant Class – 96%**

**Lion Class – keep trying!**

Attendance Ladder		
How close is your child to 100%?		
0 days off school	100%	Perfection
Equates to 2 days off school each year	99%	Excellent
Equates to 5 days off school each year	97%	Good
Equates to 10 days off school each year	95%	Slight Concern
Equates to 20 days off school each year	90%	Concerned
Equates to 30 days off school each year	85%	Very Concerned

## Dates for your Diary..

18.06.25 – Book Fair begins (families can buy books before and after school)

30.06.25 – School closed for INSET day

01.07.25 – Reception offsite visit

02.07.25 – Preesha leading musical instrument concert at 9:15am

07.07.25 – Conor leading musical instrument concert at 9:15am

08.07.25 – Sports Day (see flyers reception – am and KS1 PM))

14.07.25 - End of year school reports sent to families

15.07.25 – KS1 Summer Show (two performances: 9:30am and 2:30pm)

16.07.25 – Meet the New Teacher and

17.07.25 – Reception Graduation (morning) 18.07.25 –

School Fete – school will close at 2:00pm (no clubs and no wraparound care)

22.07.25 – School closes at 1:00pm for the summer holidays

To Be Confirmed:

Year 1 and Year 2 summer trips

Family celebration/party Looking ahead:

01–02.09.25 – INSET days for staff (school closed to pupils)

03.09.25 – Pupils return to school; wraparound care resumes

September – Meet the Teacher sessions for parents (dates and times to be confirmed)

22.09.25 – School clubs begin

We'll continue to send reminders and share further details as they are confirmed. Thank you, as always, for your continued support and involvement.



£2  
ENTRY\*

\*UP TO 4 FAMILY MEMBERS  
ALL PROCEEDS GO TO MULBERRY  
FOUNDATION FOR WOOD WHARF  
PRIMARY

# MULBERRY WOOD WHARF PRIMARY SUMMER FETE

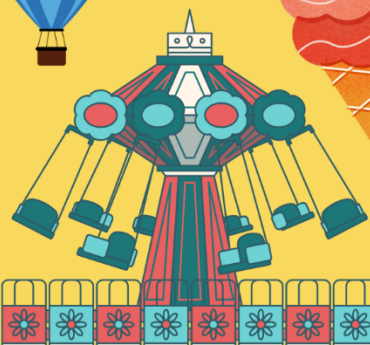
- FRIDAY 18TH JULY 2025 -

FROM  
3 PM  
TO 5 PM

BOUNCY CASTLE  
ICE CREAM  
HOOK-A-DUCK  
FOOTBALL SHOOT-OUT  
FACE PAINT  
BAKE SALE  
AND MANY MORE!

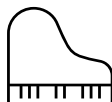
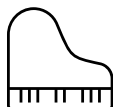
**FUN FOR ALL THE FAMILY!**

CASHLESS PAYMENTS ACCEPTED - SECURE YOUR TOKENS IN ADVANCE!



VENUE: MULBERRY WOOD WHARF SCHOOL, 20 BRANNAN STREET, LONDON, E14 9ZR  
FOR MORE INFORMATION PLEASE CALL: 0208 713 0183

**Mulberry**  
Wood Wharf Primary



## Raffle prizes so far:

1. A week of summer camp with Premier Education
2. An adult or child dance class with Effy from connect with yourself
3. In2Sports voucher
4. A toasted sandwich maker
5. A 30 pound voucher from Farmer Js  
+ many more....