

# NEWS CORNER

The latest news and information about  
Mulberry Wood Wharf Primary.

Mulberry  
Wood Wharf Primary

Outstanding  
and good in  
all areas.

Ofsted, May 2025

20 Brannan Street, London E14 9ZR

admin@mulberrywoodwharf.org

www.mulberrywoodwharf.org

020 8713 0183

@MulberryWW

Outstanding in  
Behaviour and  
Attitudes

Good in Quality  
of Education

Good in  
Leadership and  
Management

Outstanding  
Personal  
Development

Outstanding  
Early Years  
Provision

Part of the  
Mulberry  
Schools Trust

Thursday 19th  
March 2026

## Sarah Jane's Reflection of the Week

It's been a wonderfully busy week here at Mulberry Wood Wharf.

We began the week with an assembly focused on our value of the week: community. Together, we reflected on the many communities we belong to in our lives, our families, friendship groups, and neighbourhoods, and, importantly, the shared sense of belonging we all have as part of Mulberry Wood Wharf Primary School, as well as within our individual class communities.

We linked this learning to the celebration of St Patrick's Day, which took place on Tuesday 17th March, and explored how Irish traditions are celebrated across the world. As always, we connected this to what makes Wood Wharf such a special place, our ability to recognise, share and learn from the rich range of cultures, traditions and celebrations within our community. I also couldn't help but notice how the children simply couldn't stop moving when I played some Irish music, a natural jig emerged across the hall! It was such a joyful moment, and I think we may need more Irish music in future assemblies.

Our dance show was, once again, a great success. It was fantastic to see the children stepping out of their comfort zones and confidently showcasing a range of styles including ballet, contemporary and street dance. We are incredibly proud of their courage and enthusiasm. And thank you to Effy and her team for making this happen.

As we approach the end of Ramadan, we know many of our families will be preparing to celebrate Eid. With the long weekend ahead, we would like to wish all of our families a restful break and, to those celebrating, Eid Mubarak, we hope you have a joyful and special time with loved ones.

Looking ahead to next week, we have plenty to keep us busy right up until the end of term. Year 2 will be visiting the Docklands Museum, and we are very much looking forward to our Reception Gingerbread Man performance. We will also be holding our Eid parties on Friday 27th March, and children are warmly invited to come to school in their Eid clothes or party clothes on this day.

As Eid falls on a Friday this year, we have announced this week's Stars of the Week today so that families could share in the celebration. We will also invite these children to come forward again in next week's assembly, as we know how special that moment is and we wouldn't want them to miss it.

You may notice that this week's newsletter is slightly shorter than usual, and class sections are not included. This was to ensure we could share key information with you in a timely way, thank you for your understanding.

I will leave you with a quote that reflects our focus this week:

"Alone, we can do so little; together, we can do so much." – Helen Keller

Wishing you all a wonderful long weekend.

# REMINDERS

March  
20<sup>th</sup>

**School closed for Eid**

Friday 20<sup>th</sup> March

March  
23<sup>rd</sup> -27<sup>th</sup>

**No after School  
Clubs except JAGS**

Monday 23<sup>rd</sup> March - Friday 27<sup>th</sup>  
March

March  
26<sup>th</sup>

**EYFS Gingerbread  
Man Show**

Thursday 26<sup>th</sup> March - 9:30am &  
2:00pm

March  
27<sup>th</sup>

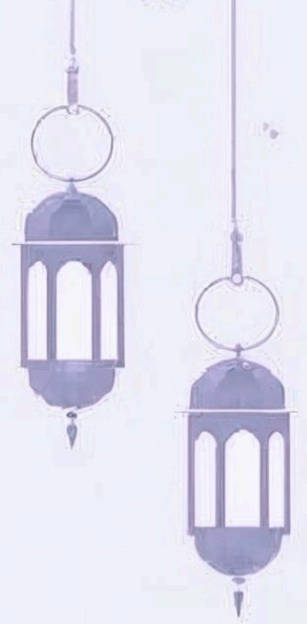
**School closes at 1:00pm  
(gate opens at 12:50pm)**

Friday 27<sup>th</sup> March

April  
13-17<sup>th</sup>

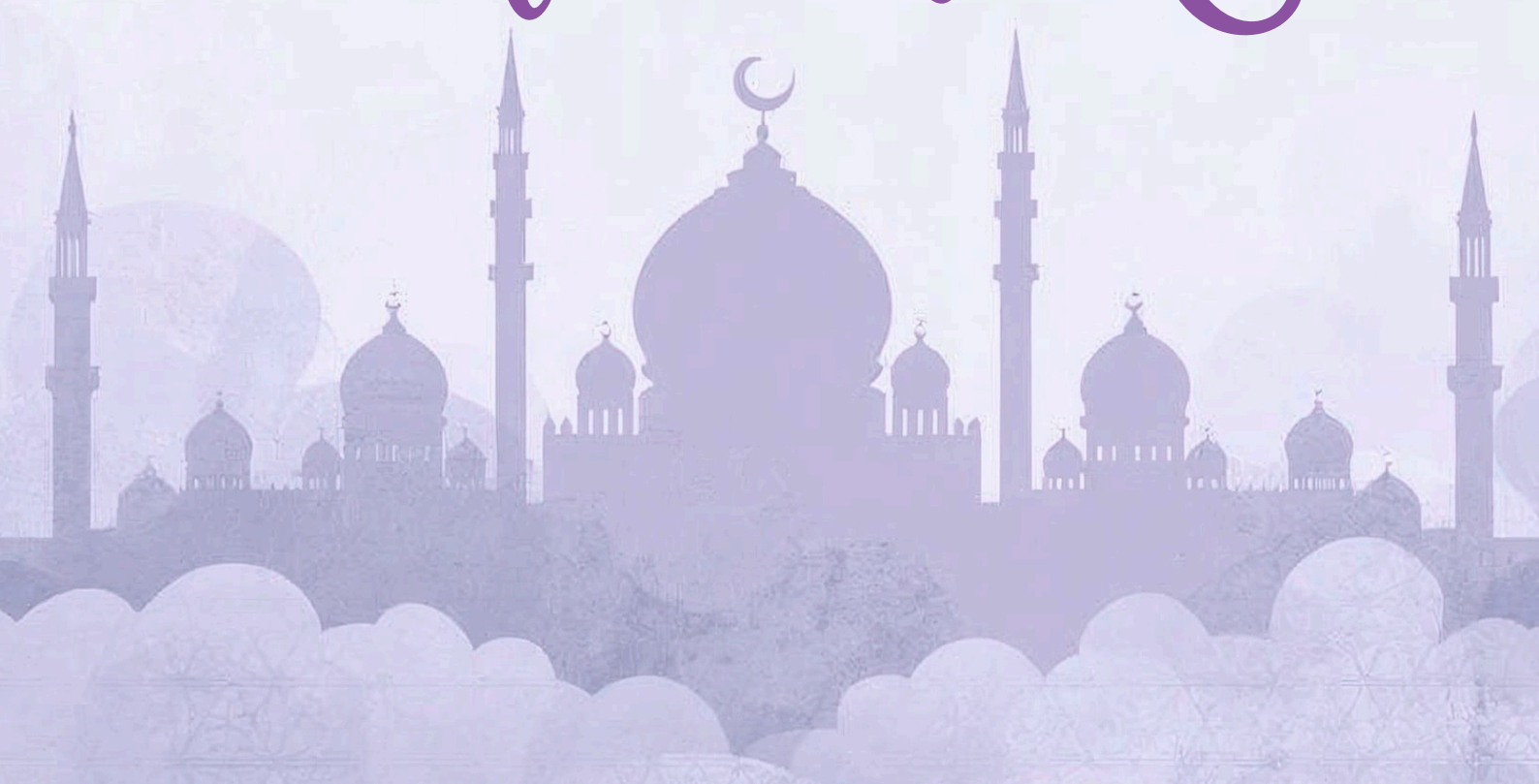
**No after school clubs  
except JAGS**

Monday 13<sup>th</sup> April - Friday 17<sup>th</sup>  
April



From us to you a ....

# Eid Mubarak



# Star Writer



Tesnim



Jaedon



rue



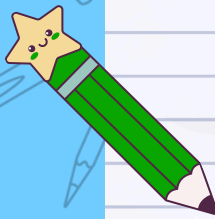
Yusra



Adi



Hanna



Maria



## Jigsaw!

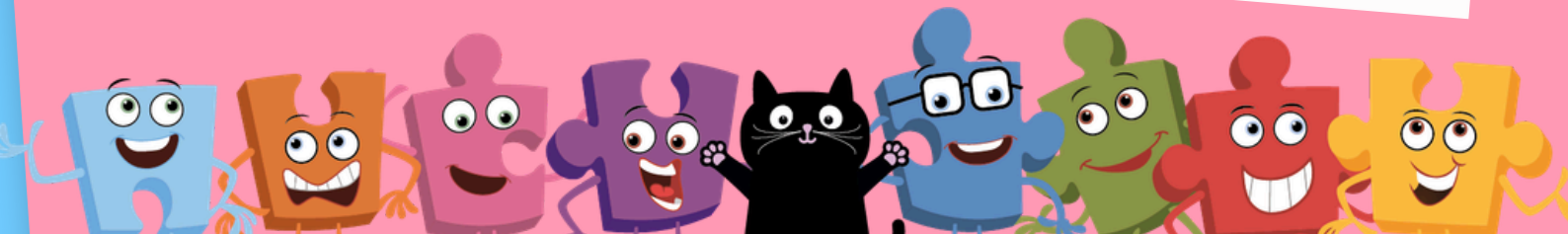
'Changing Me' Jigsaw curriculum PSHE Parent information sessions for each year group are:

27.04.2026 - Y1

28.04.2026 - Y2

29.04.2026 - Y3

9:00-9.30am - In the hall.



# stars of the week

Value of the week:

**Community**

**Blue Whale Class: Natalia and Skye**

**Tiger Class: Shivi and Stefanie**

**Panda Class: Zyon and Mishel**

**Lion Class: Noah and Laila**

**Elephant Class: Mabel and Sarah**

**Penguin Class: Ashvik and Khaled**

**Koala Class: Kayla and Noa**

# ATTENDANCE!

Mon

Tue

Wed

Thu

Fri

The attendance trophy this week goes to:

Elephant - 100%



**GOLD - 97+**

**SILVER - 95 - 97%**

**BRONZE - 90-95%**

# EYFS GINGERBREAD MAN SHOW

Thursday 26<sup>th</sup> March 2026

SHOW TIMINGS: 9:30AM AND 2:00PM

We would like to inform parents that there will be two show timings. To ensure that all families have a fair opportunity to attend, we kindly ask that you attend only one show so please book your preferred slot by talking to the class teacher.

Thank you for your understanding and consideration.

# Menu week 2

Monday Tuesday Wednesday Thursday Friday

## Mains

HAPPY TUMS

Classic Spaghetti Bolognese (G) Served with Garden Salad  
 Chicken Sausages with Caramelised Onion Gravy (G,Su)  
 Mexican Lamb & Mixed Bean Chilli  
 Battered Fish Fillet (G,F)

## Veggie

MEAT FREE

Mediterranean Vegetable Lasagne (G,Mk) with Garden Salad  
 Veggie Sausages with Mash & Peas (G)  
 Mexican Bean & Vegetable Burrito (G,Mk)  
 Crispy Vegetable Samosa with Mango Chutney (G,Mu)

## Veg

EXTRA GOOD

Steamed Seasonal Greens  
 Green Beans  
 Cauliflower  
 Carrots  
 Garden Peas  
 Baked Beans

## Carbs

FUEL FOOD

Garlic Bread (G)  
 Creamy Champ Mashed Potatoes (Mk)  
 Roast New Potatoes  
 Zesty Lime Rice  
 Oven Baked Chips

## Dessert

SOMETHING SWEET

Fresh Fruit or Yoghurt (Mk)  
 Fresh Fruit or Yoghurt (Mk)  
 Fresh Fruit or Yoghurt (Mk)  
 Fresh Fruit or Yoghurt (Mk)  
 Fresh Fruit or Yoghurt (Mk)  
 Fresh Fruit or Yoghurt (Mk)  
 Fresh Fruit or Yoghurt (Mk)

## Jacket Potatoes

TASTY FAVOURITES

Cheese and Crackers (G,Mk)  
 Cheese and Crackers (G,Mk)  
 Cheese and Crackers (G,Mk)  
 Cheese and Crackers (G,Mk)  
 Cheese and Crackers (G,Mk)  
 Cheese and Crackers (G,Mk)  
 Jacket Potato with Baked beans (None)  
 Jacket Potato with Baked beans (None)  
 Jacket Potato with Baked beans (None)  
 Jacket Potato with Baked beans (None)  
 Jacket Potato with Baked beans (None)  
 Jacket Potato with Baked beans (None)  
 Jacket Potato with Baked beans (None)

Salad bar, cold desserts and fresh fruit available daily.

## DATES

12/01/26 - 02/02/26  
 02/03/26 - 23/03/26

**Allergens:** Please note the allergens shown within these menus are subject to change.

Ce = Celery F = Fish L = Lupin Se = Sesame Seeds  
 Cr = Crustacean G = Cereals containing Gluten Mu = Mustard So = Soya  
 E = Eggs Mo = Molluscs N = Nuts P = Peanuts Su = Sulphur Dioxide

Look for this logo on the menu to try a yummy seasonal special!



# BE WELL

HEALTH | WELLNESS | PLAY

## School's out!

30th March - 9th April • £23.30 per day

### Mile End Park Leisure Centre & Stadium Easter Holiday Club

Our Easter Holiday Club is packed with fun activities from sports to arts and crafts, helping your child to make the most of their Easter holidays.

Find out more



[be-well.org.uk](http://be-well.org.uk)

WE ARE  
**HIRING**

**MID DAY SUPERVISOR  
(Lunch Supervisor)**

Mulberry Wood Wharf  
Current Vacancies

 **Link**

Closing Date: On going  
Interviews: On going  
Start: ASAP

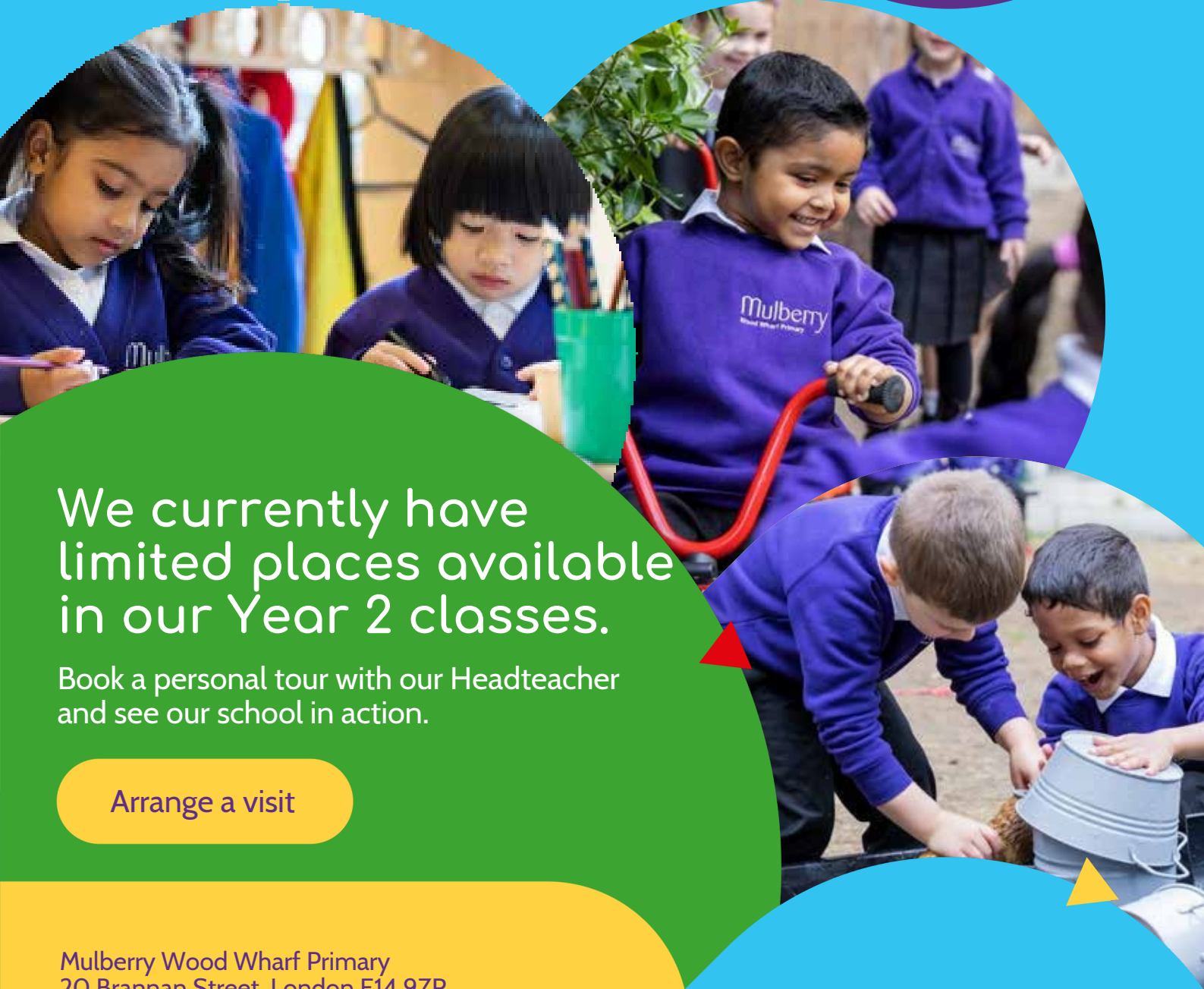
**APPLY NOW**



Spaces Available in Year 2

# Mulberry

Wood Wharf Primary



We currently have limited places available in our Year 2 classes.

Book a personal tour with our Headteacher and see our school in action.

Arrange a visit

Mulberry Wood Wharf Primary  
20 Brannan Street, London E14 9ZR  
☎ 020 8713 0183  
✉ [mulberrywoodwharf@mulberryschoolstrust.org](mailto:mulberrywoodwharf@mulberryschoolstrust.org)  
🌐 [www.mulberrywoodwharf.org](http://www.mulberrywoodwharf.org)  
✂ @MulberryWW

Part of the  
**Mulberry**  
Schools Trust



# Celebration Report

Mulberry Schools Trust

## 2024-25

Published January 2026

updates

What snacks should I pack?

CLICK HERE

Mulberry  
Wood Wharf Primary

Daily snacks

Children in Reception through to Year 2 take part in the National fruit scheme, which means that a range of fruits and vegetables are provided every day + treat in Reception classes so they provide some bread based snacks with healthy spread.

© Mulberry Wood Wharf

Healthy Lives Families  
Newsletter

<https://signup.es-mail.co.uk/Signup/d7ef81e9f0a6a2760e48c3610959fb34>



Top Performing  
Borough in London  
for Healthy Schools

CLICK HERE

Home Learning  
Opportunities

Link

<https://www.mulberrywoodwharf.org/pupils/mulberry-learn-2/#tab-id-7>

At the Mulberry Schools Trust, we are proud to nurture ambition from the very start. Our newest publication, Going Places 2025, celebrates the incredible destinations achieved by our Sixth Form students – showing what’s possible for every Mulberry child in the future. Read more and be inspired here:

CLICK HERE

<https://bit.ly/48i3GqH>

# PARTNERSHIP WITH Compass

We are pleased to share that Mulberry Wood Wharf Primary has partnered with [Compass Tower Hamlets](#) — a fantastic service supporting children, young people, and families with all aspects of health and wellbeing.

Compass offers guidance and support on a wide range of topics including:

 Oral health

 Sleep

 Mental health

 Body image

 Healthy eating

 Behaviour

 Parenting

...and much more!

Families can be referred by the school, but you can also self-refer directly. We encourage you to take a look at their website to find out more about the support available.

# YEARLY PLANNER

## MONTHLY NOTES

2025/2026

### September

- Meet the teacher  
08.09.25 - Yr 1- 3:45pm  
09.09.25 - Yr 2 - 3:45pm  
10.09.25 - Yr 3 - 3:45pm  
22.09.25 - Reception - 3:45pm
- Half term Curriculum letter
- Rosh Hashanah (Judaism) - 22th - 24th Sept
- Year 3 Reading workshop - 30th Sep (9:00am - 9:30am)
- Reception Tapestry Workshop TBC
- Coffee morning TBC

### October

- Black History Month
- Mid Autumn Festival-6thOct
- Photo day - 7th Oct
- Yr 3 Soanes Centretrip-8thOct
- World Mental HealthDay-10th Oct
- Flu Vaccination (allpupilseligible) - 17th Oct
- Trust twilight - 22ndOct(NOCLUBS)
- Halloween dress upday-24th Oct
- Diwali dress up day-20stOct
- Coffee Morning TBC

### November

- Bonfire Night - 5th Nov
- Half Term Curriculum Letter
- Anti- Bullying Week - 10th - 14th Nov
- Parents Evening - 11th - 12th Nov
- Remembrance Day - 11th Nov
- Festival of Arts - 13th Nov
- Road Safety Week - 17th - 21nd Nov
- Flu Vaccination - 21st Nov (All pupils eligible)
- Thanksgiving - 27th Nov

### December

- ChristmasAdvent Calendar on Website
- Music Concerts - 1st and 3rd Dance
- Show with Effy - 2nd Dec 2:00pm
- International Day of people with Disabilities - 3rd Dec
- Reception Nativity- 10th Dec (9:15-10:00am and 10:30- 11:15am)
- Carol Singing at JL - 2nd Dec
- Christmas Jumper Day - 12th Dec
- Christmas Show - 12th Dec
- Pantomime - 16th Dec
- Christmas Party Day - 19th Dec
- NO CLUBS From Mon 15th - Fri 19th Dec

### January

- Half Term Curriculum Letter
- EYFS Trip to Library - 12th /13th Jan
- Yr 3 Trip to Library - 14th Jan
- Martin Luther King Day - 19th Jan
- EYFS Trip to Soane Centre - 20th /21st
- Burns Night - 25th Jan
- Coffee Morning with TBC
- Yr 3 Trip to British Museum - 30th Jan

### February

- National Storytelling Week - 2nd - 6th Feb
- Storyteller - 2nd Feb
- Yr 3 Trip Art Exhib - 6th Feb (am)
- Yr 2 Trip to Half Moon Theatre - 6th Feb (pm)
- Children's Mental Health Day - 9th - 13th Feb
- Safer Internet Day - 10th Feb
- Chinese New Year 17th Feb
- Ramadan Starts - 18th Feb
- School Closed - INSET Day - 23rd Feb
- Year 1 Trip to Church - TBC

### March

- Holi Festival - 4<sup>th</sup> March
- World Book Day - 6th March
- International Women's Day - 8th March
- British Science Week - 9th -13th March
- Stem Day - 10th March
- Cosy Read and Meet the Author - 11th March
- St Patricks Day - 17th March
- Global recycling Day - 18th March
- Eid ul Fitr - School closed- 19/20th March
- EYFS Gingerbread Man Show - 26th March
- Eid Party - 27th March
- KS1 - Showcase spectacular - TBC
- NO CLUBS from - Mon 23rd - Fri 27th March
- School closes at 1:00pm - Fr 27th March

### April

- Easter Holiday - 30th March -10th April
- Parents Evening 28th - 29th April TBC
- Changing me parents meetings (Yr1 - Yr3) TBC

### May

- EYFS Trip to Half Moon TBC
- Eid ul Adha - 26th /27th May
- Dance Performance with Effy - 19th May

### June

- Phonics screening Check - 8th - 12th June
- Optional SAT's - 15th - 18th June
- Changing me unit taught
- Sports Day - 30th June

### July

- Musical Performance - 6th and 8th July TBC
- Reports handed out
- Reception Shoe Box workshop TBC
- Summer Show - 14th July (2 showings)
- School Fete 10th July
- Reception Graduation TBC
- Last Day of School (closes at 1:00pm) - 17th July
- NO CLUBS from Mon 13th - Fri 17th July

### Weekly

- Newsletter - Fridays
- PE Days - Every Tuesday and Thursday
- Friday Celebration Assemblies (parents are invited)

Please note that the calendar is subject to change throughout the year.