

# NEWS CORNER

The latest news and information about  
Mulberry Wood Wharf Primary.



Friday 24th  
April 2026

## Sarah Jane's Reflection of the Week

This week, our value of resilience has been woven through so many aspects of school life. It is always inspiring to see how our children rise to challenges, keep going when things feel tricky, and take pride in their achievements.

I spent some time in Year 2 this week, where the children have been working hard on fractions. This can be a challenging concept, but what stood out was their determination to keep trying, explaining their thinking, and learning from mistakes. That perseverance is exactly what resilience looks like in action.

In Reception, I had the pleasure of visiting both Blue Whale and Tiger Class, spending time looking at the children's learning journeys on Tapestry. Every child has their own individual observations, which really capture their unique personalities, interests, and development. Observing children so closely is incredibly powerful, it reminds us that each child is full of curiosity, potential, and their own special spark. It is also wonderful to see parents contributing observations from home; these moments help us build a richer, more complete picture of each child's learning journey.

A real highlight of my week, once again, has been meeting with our Star Writers. Sharing the work that children feel proud of is always a privilege, and what truly stands out is the progress they have made since September. Their growth is a testament to their resilience, effort, and commitment to improving their writing.

I'm also pleased to share that new contractors have now been assigned, and work will be starting very soon. This is a local authority project, and we are incredibly excited to see the building come together ready for September. The kitchen is the priority, followed by the playground spaces, the KS2 floor, and the installation of IT. It's an exciting time for our school community, and we look forward to seeing these developments take shape.

With the London Marathon taking place this weekend right on our doorstep at Mulberry Wood Wharf, it feels especially fitting to reflect on resilience. Thousands of runners will take on this enormous challenge, each with their own reason, their own story, and their own determination to keep going. That same spirit is something we nurture in our children every day. We are also looking forward to our own Mini Marathon on Friday 1st May, what a fantastic way to celebrate this value together!

A reminder that Parents' Evening will take place on Tuesday 28th April. I have sent out a paper letter this week to apologise and explain the issues we are currently experiencing with Arbor. If you are having difficulty booking your slot, please do come and see us in the office and we will happily book this manually for you. I am working closely with Arbor to resolve these glitches as quickly as possible, please be assured, I feel your frustration and I'm on it!

Wishing you all a lovely weekend ahead. It looks set to be a sunny one, and I will certainly be making the most of some time outdoors.

"Courage isn't having the strength to go on; it is going on when you don't have the strength." Bear Grylls

# Diary Dates

27.04. 2026: Y1 RHE workshop - 9am

28.04.2026: y2 RHE workshop - 9am

28:04.2026: parents evening

29.04.2026: Y3 RHE workshop - 9am

01.05.2026: Mini London Marathon (in school)

06.05.2026: Class photos

19.05.2026: Dance performance - Effy

20.05.2026: National numeracy day

22.05.2026: School closes for May half term  
(normal closure time)

# Growing Readers and Writers

Reading every day at home is one of the most important ways you can support your child's learning. Regular reading builds confidence, fluency, and a lifelong love of books. Even just a few minutes each day can make a real difference to your child's progress.

This term, pupils on the phonics programme have started in their new groups. To support this, teachers have shared short phonics videos. We strongly encourage you to watch these with your child, as they follow the same steps used in class: identifying special friends, using Fred Talk to sound out words, and then reading the word fluently. These familiar routines help children feel more confident and successful in their reading.

Please aim for your child to read daily. This consistent practice helps to establish positive reading habits and reinforces the skills they are learning in school. Pupils have access to a range of books, including a levelled reading book, a book of their own choice, and their Core Book Challenge text.

We also recommend visiting Canary Wharf Idea Store, which has recently opened its children's library space. It is a fantastic place for your child to explore new books and develop their love of reading. If you do not yet have an Idea Store card, please consider signing up, as classes will be attending library sessions and children will be able to borrow books during these visits.

Finally, please remember to fill in your child's reading record regularly. This helps us to communicate with you and better understand your child's reading habits at home, so we can support their development effectively. Thank you for your continued support.

The benefits of children reading as they grow:



# Short Story Competition

We are excited to announce a fantastic Summer Writing Competition at MWW! We know we have many creative writers in our school, and we can't wait to read the imaginative stories produced by our talented pupils.

Your challenge is to write a short story inspired by this illustration. Use the questions provided to inspire your ideas and help you plan your story.

We look forward to seeing your creativity shine—happy writing!

· What happened before this picture?

How did the house get on top of the dragon? Who tied it onto the dragon's back?

Is the dragon happy about this?

How do the girl and the dragon know one another?

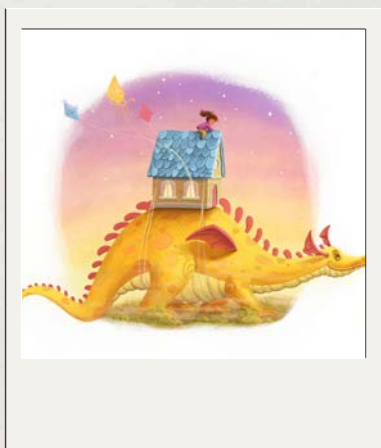
Is anyone else inside the house?

Where did the kites come from?

Where are the girl and the dragon going?

Why are they travelling in this way?

Give this picture an interesting title



**Competition Deadline: Thursday 7th May 2026**

# Star Writer

Shuyang



Ziva



Kaira



Meera



Liam



Max



Dawud



## Jigsaw!

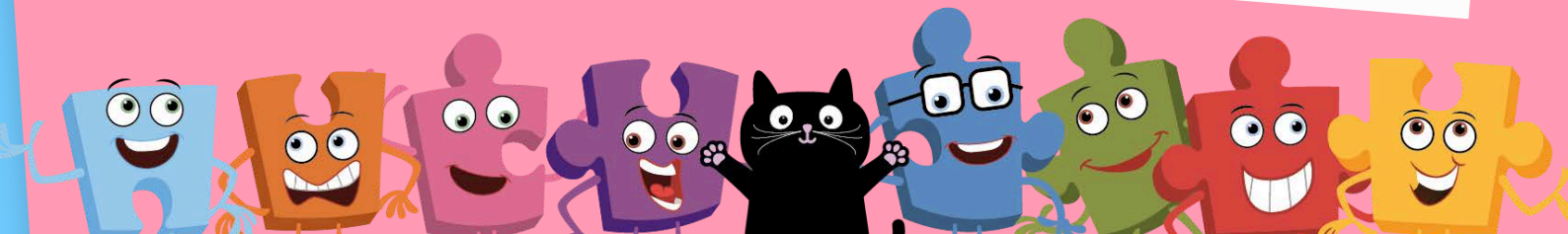
'Changing Me' Jigsaw curriculum PSHE Parent information sessions for each year group are:

27.04.2026 - Y1

28.04.2026 - Y2

29.04.2026 - Y3

9:00-9.30am - In the hall.



# Nature Learning at MWW

## Project Wild Thing

Why not watch this....  
it's really interesting,

## The Wild Network



# Tiger Class

This week in Tiger Class has been full of sunshine and excitement! We made the most of the warm weather by spending time outdoors, enjoying the fresh air while learning and playing together.

In maths, we have been busy exploring numbers 10-17, practising how to recognise, write, and understand them through fun activities.

Our literacy work has been inspired by the story Jack and the Beanstalk, where we used our imaginations to write about the adventure and think about what we might find at the top of our own beanstalks. To bring the story to life, we also had a wonderful time decorating our very own magic beans, adding colour and sparkle as we imagined them growing into something extraordinary. It has been a joyful and creative week for everyone!

Reminder – please book your parent meeting slot with Jen!



# Blue Whale Class

This week, the children have continued their learning around Jack and the Beanstalk, focusing on the question: What does a plant need to grow? We explored this through discussion and hands-on activities, helping the children to develop their understanding of how plants grow and what they need to thrive.

As part of this learning, we worked together to create a set of instructions—a “to-do list”—for planting a seed. The children carefully thought about each step, showing great teamwork and attention to detail. After this thoughtful preparation, we were very excited to plant our own seeds. The children are now eagerly waiting to see what will happen next, and we have our fingers crossed that by Monday we might see the first little shoots appearing!

In maths, the children have been learning about verbal counting patterns. They have worked collaboratively as a class to create their own numerical patterns, and it has been fantastic to see how quickly and confidently they have grasped this concept. Their enthusiasm and growing confidence in recognising and continuing patterns has been wonderful to observe.

We are all looking forward to seeing what next week brings—especially any progress with our seeds



# Lion Class

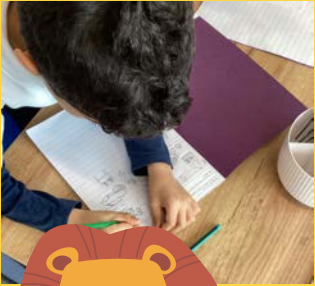


This week in Maths, we have been exploring the concept of making equal groups. First we used practical resources to share objects fairly. Then we moved onto pictorial representations and identified equal groups. We learnt that 'equal' means the same amount. These skills are important foundations of division and multiplication.

In English, we have been focusing on writing a first-person recount based on the story Last Stop on Market Street. The children have taken on the role of either Nana or CJ, using descriptive language and verbs to retell events from their chosen character's perspective. They have been working hard to include thoughts, feelings, and key details from the story to bring their writing to life. We continue to use key skills of capital letters, finger spaces, full stops. We have also been working hard to remember to apply our phonics skills (set 2 & 3) and writing using the correct letter formation.

In Geography, we have been developing our creativity and mapping skills by creating imaginary maps inspired by familiar stories. First we read the story Beegu. Then we identified and listed all the different settings within the story. Finally we used these settings to create our map by drawing and labelling. This has been a wonderful opportunity to combine imagination with geographical understanding.

Have a lovely weekend!



# Panda Class

## REMINDER

Monday 27th April- RSE: Changing Me Workshop in the hall, 9- 9:30

- Monday 11th May: Year 1 trip to London Museum Docklands. Panda 9am-12am. Lion 10am-1pm.

This week, our class had an exciting outing to Cubitt Town Library. It was a wonderful opportunity to see how much the children have grown, both in confidence and responsibility. They represented the school exceptionally well, looking out for one another and ensuring everyone stayed safe throughout the trip. A huge thank you goes to our parent volunteers - your support is truly invaluable and greatly appreciated! During our visit, the children enjoyed choosing books that interested them, sharing stories together, and exploring a variety of genres. It was fantastic to see them so engaged and enthusiastic about reading.



In Maths this week, we focused on concepts of equal groups and doubling. We began with hands-on activities and concrete examples to help the children fully grasp the ideas before moving on to written questions and word problems. To reinforce these skills at home, children are expected to spend at least 15 minutes each day on NumBots. Regular practice helps build confidence and fluency with key number facts in a fun and rewarding way. Your child's login information should be in their reading record. If it is not, please ensure that they bring their reading record to school so we can provide it.



Looking ahead, please remember that Parent's Evening will take place on Tuesday 28th April. If you have not already scheduled a slot, we encourage you to do so.

Additionally, we have an upcoming trip to the Docklands Museum on Monday 11th May 2026. Full details and consent forms are available on Arbor. Please take a moment to check and provide consent so your child can join this exciting educational experience.



# Elephant Class

Year 2 pupils have had a fantastic week of learning across the curriculum. In maths, they have been focusing on fractions, exploring halves, thirds, and quarters of both numbers and amounts. They have developed their understanding through practical activities and have used the bar model with increasing confidence to solve a range of word problems. In English, pupils have worked really hard to develop their writing skills, applying new vocabulary and improving their sentence structure.

In science, the children have been exploring plants and learning to label the different parts of a bulb. They enjoyed hands-on experiences, observing and touching a variety of bulbs including onions, garlic, and daffodils. The class has also been carefully monitoring their bean plants and has started to notice the beginning stages of the germination process. We are all excited to see what changes will occur over the weekend!



# Penguin Class

There has been a great sense of focus and creativity in the classroom this week, with the children engaging really well in their new learning and showing growing confidence in sharing their ideas.

In Maths, the children have been introduced to fractions. They have been learning about halves, quarters, and thirds, and exploring how shapes and amounts can be divided into equal parts. Using practical resources and visual examples has really helped the children to understand this new concept. They have also begun to explain their thinking, using mathematical language such as equal parts and whole, which has been fantastic to see.

In English, the children have been working on writing a TV script in the style of David Attenborough. They have been imagining themselves narrating a wildlife programme about our school swans, thinking carefully about the calm and descriptive tone he uses. The children have enjoyed using adventurous vocabulary and building detailed descriptions, and it has been lovely to see their confidence grow as they bring their ideas to life.

In PE, the children have been taking part in athletics, focusing on different types of races. They have practised sprinting, racing against one another, and improving their speed and coordination. It has been great to see their determination, teamwork, and encouragement towards each other during these activities, as well as their growing confidence in physical skills.

It has been another fantastic week of learning, and we are very proud of the effort and enthusiasm the children continue to show.



# Koala Class

We have had another fantastic week, with the children continuing to build on their learning across all subjects.

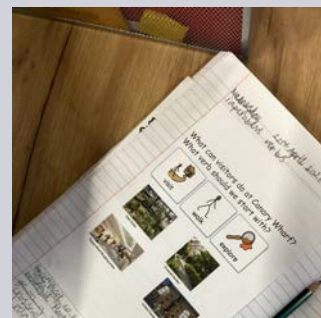
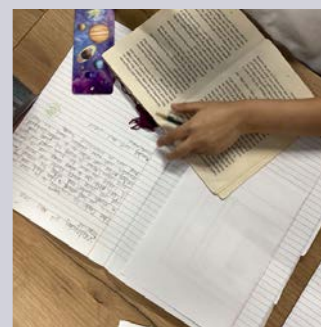
In our English lessons, the children have been developing their writing skills by focusing on fronted adverbials and imperative verbs, in preparation for writing their own guide. This has been linked to our topic on Canary Wharf, with the children thinking carefully about what visitors can do and see there. It has been great to see them applying these skills in a meaningful context.

In Science, we have been exploring reflective materials and how light bounces off surfaces to create images. The children showed great curiosity when investigating how reflection works and discussed why reflective materials are important, particularly in the creation of safety clothing.

During our Maths lessons, we have been learning how to subtract fractions and find fractions of amounts. We have also explored the meaning of the denominator in more detail and used precise mathematical vocabulary to explain the steps needed to find a fraction of an amount. The children have been working hard to explain their reasoning clearly.

In Geography, the children were challenged to deepen their understanding of the UK by learning about counties and how they differ from cities and countries. It was fantastic to see them so motivated when using an atlas to locate and identify different counties across the UK.

It has been another week full of enthusiasm and progress, and we are very proud of how engaged the children have been in their learning.



## LORNA'S UPDATE



It's been lovely to see the sun shining this week, there's a real sense that spring is underway, with summer just around the corner! With June soon approaching, that also means that it's not long until the year 1 phonics screening. Children have been busy revising their sounds during phonics lessons and have been making great progress. A quick reminder about the importance of being on time each day. Reading is our first lesson and it is crucial for children's progress across all subjects. Arriving promptly ensures that every child can start the day focused and ready to learn, without missing this vital part of the curriculum.

In other news, some of you have been asking why I have been on crutches recently. Earlier this week I unfortunately fell down the stairs and snapped a ligament in my ankle, which has meant I have been working from home for part of the week. Ouch! I am now back in school and have really felt the love and care from the children and staff. Thank you to everyone for your kindness, it has made a real difference!

This week our staff have also been busy developing their practice. Fawziyah is our school maths lead and has been collaborating with maths leads from other schools in London throughout the year to ensure our maths provision is of the highest quality for our pupils. Naimah and Lucy also attended maths training this week and have returned full of exciting ideas to share.

The Cleaning Crew have been hard at work action planning this week, focusing on how to promote a clean and tidy environment across the school. Their ideas include creating posters, speaking in assembly and contributing to the school website. As ever, I am so impressed with their ambition, initiative and teamwork. They are a real credit to our school community.

Finally, a special shout out to Blue Whale class for 98% attendance. What a fantastic achievement, keep it up!

# stars of the week

Value of  
the week:

**Resilience**

Blue Whale Class: Maya & Kiaan

Tiger Class: Luna & Kanysinsola

Panda Class: Alice & Ishaaq

Lion Class: Vinnie & Erato

Elephant Class: Mia & Xavier

Penguin Class: Rooh & Muntaha

Koala Class: Maria & Ria

# ATTENDANCE!

Mon

Tue

Wed

Thu

Fri

The attendance trophy this  
week goes to:

Blue Whale - 98%

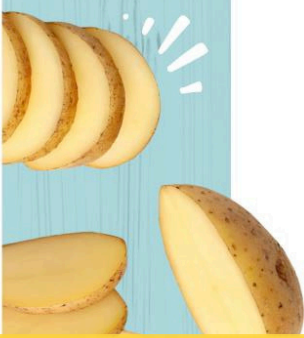


**GOLD - 97+**

**SILVER - 95 - 97%**

**BRONZE - 90-95%**

# MENU week 3



## Mains HAPPY TUMS

## Veggie MEAT FREE

## Veg EXTRA GOOD

## Carbs FUEL FOOD

## Dessert SOMETHING SWEET

Monday	Tuesday	Wednesday	Thursday	Friday
Mexican Chill Chicken (G)	BBQ Hot Dogs with Crispy Onions (G,So)	Roast Turkey with Stuffing and Gravy (G)	Classic Spaghetti Bolognese Served with Garden Salad (G)	Battered Fish Fillet (G,F) or Salmon Wholemeal Pasta Bake (G,F,Mk)
Chilli Con Veggie (G)	Sticky BBQ Veggie Hot Dog with Crispy Onions (G,E)	Vegan Cottage pie (Ce,So)	Mediterranean Vegetable Lasagne with Garden Salad (G,Mk)	Large Vegetable Samosa (G)
Chopped Corn Salad	Sweetcorn	Steamed Green Beans	Baby Carrots	Peas Baked Beans
Flour Tortilla (G)	Seasoned Wedges	Crunchy Roast Potatoes	Garlic Bread (G,So,Mk)	Chips
Wholegrain Steamed Rice	Fresh Fruit Yoghurt (Mk,So)	Fresh Fruit Yoghurt (Mk,So)	Fresh Fruit Yoghurt (Mk,So)	Fresh Fruit Yoghurt (Mk,So)

Jacket Potatoes, 'Allergen Free' Salad Bar, Cold Desserts and Fresh Fruit are available daily.

**Dates**  
27/04/26 - 25/05/26-  
22/06/26

**Allergens:** Please note the allergens shown within these menus are subject to change.  
Ce = Celery F = Fish L = Lupin Mu = Mustard Se = Sesame Seeds  
Cr = Crustacean G = Cereals containing Gluten Mk = Milk N = Nuts So = Soya  
E = Eggs Mo = Molluscs P = Peanuts Su = Sulphur Dioxide

**APRIL NEW POTATOES**  
**MAY BASIL**  
**JUNE BEETROOT**  
**JULY MINT**

Look for this logo on the menu to try a yummy seasonal special!



tcs  MINI LONDON  
MARATHON 26  
IN SCHOOLS

# TCS MINI LONDON MARATHON IN SCHOOL

CLICK HERE 



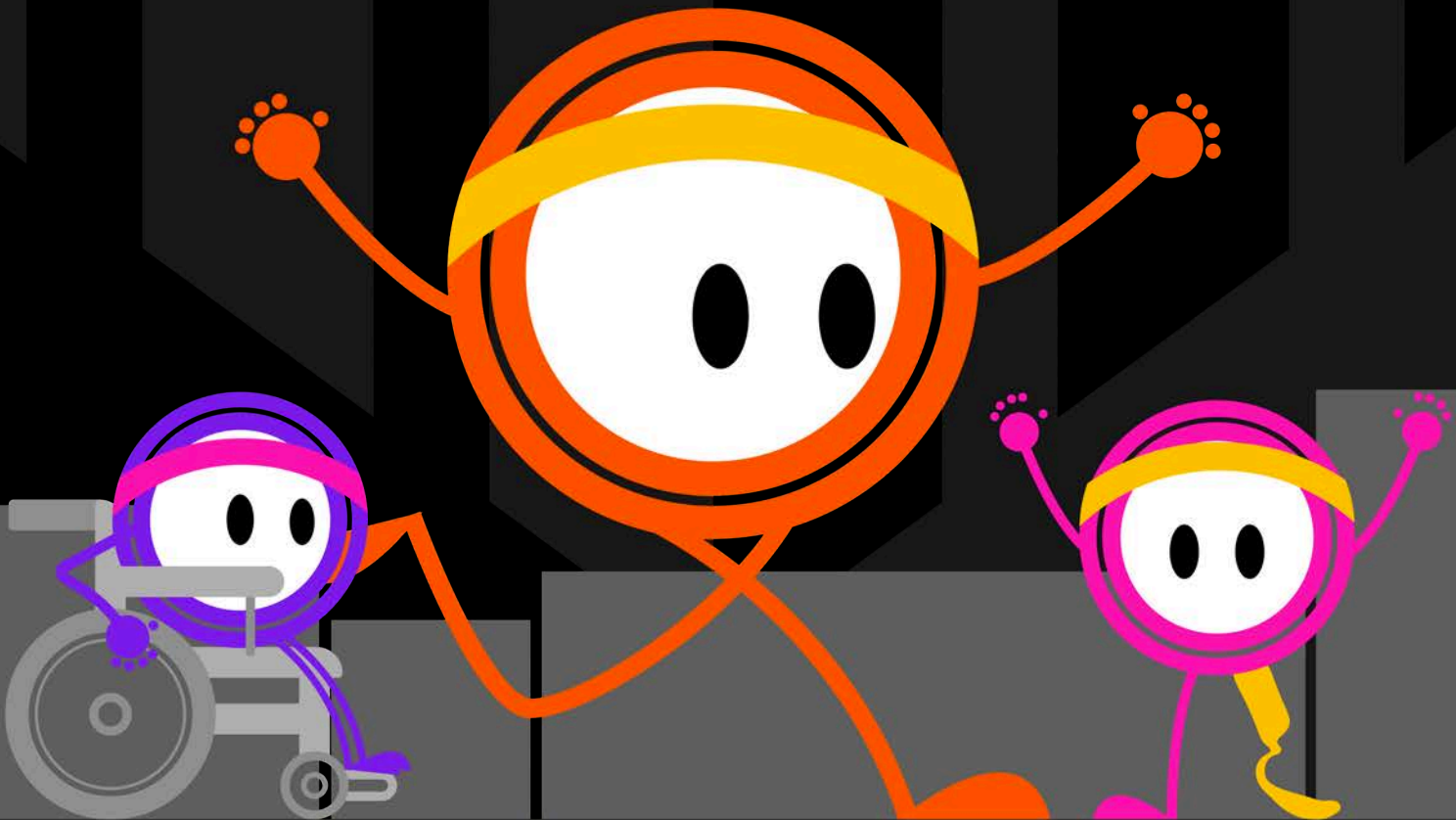
Friday 1 May 2026

#WeRunTogether

CLICK  
HERE!

Children to come to school in sports clothes

We will take part in London Mini Marathon by running 2  
miles in our school playground!



Mulberry  
Wood Wharf Primary

**LME** LONDON  
MARATHON  
EVENTS INSPIRING  
ACTIVITY

20  26

HOLIDAY

HQ

WORLD  
CUP

TEAM KIT & FLAG  
WORKSHOPS

FOOTGOLF & GAME ARENA

MAKE & TAKE YOUR OWN  
SPORTS BOTTLES

View Dates & Book  
in 2 Minutes

Don't Miss Kick-Off This May Half Term!

# A Half Term packed with action

WHERE HOLIDAYS COME ALIVE!  
RUNNING FROM 26TH - 29TH MAY

Celebrate the big kick off with JAG Holidays:

⚽ **Create team names, flags and anthems to kick off the week**

Take part in striker, defender and goalkeeper skill challenges

**Design and build their own World Cup trophy**

Compete in quizzes, team missions and problem-solving games

**Design football shirts, bottles and flipbooks to take home**

Play matches, footgolf and high-energy team games

**Finish the week with finals day, celebrations and awards**



VIEW OUR FULL MAY SCHEDULE ONLINE!



**Sibling discount** – Save 10%

**Multi-day booking discount** – Save 4%

Ofsted-registered care

Experienced, DBS-checked staff

Full & half-day options

48-hour cancellation policy

Tax-Free Childcare accepted

Trusted by parents and children across 90+ venues!

Click here to book now or  
find out more!

Scan to secure your spot



FOLLOW US J UONILOINREA D@VJEUNNTIUOREASDGVREONUTPU.RCEOS



JUNIORADVENTURESGROUP.CO.UK

WE ARE

HIRING

**MID DAY SUPERVISOR  
(Lunch Supervisor)**

Mulberry Wood Wharf  
Current Vacancies

 Link

Closing Date: On going  
Interviews: On going  
Start: ASAP

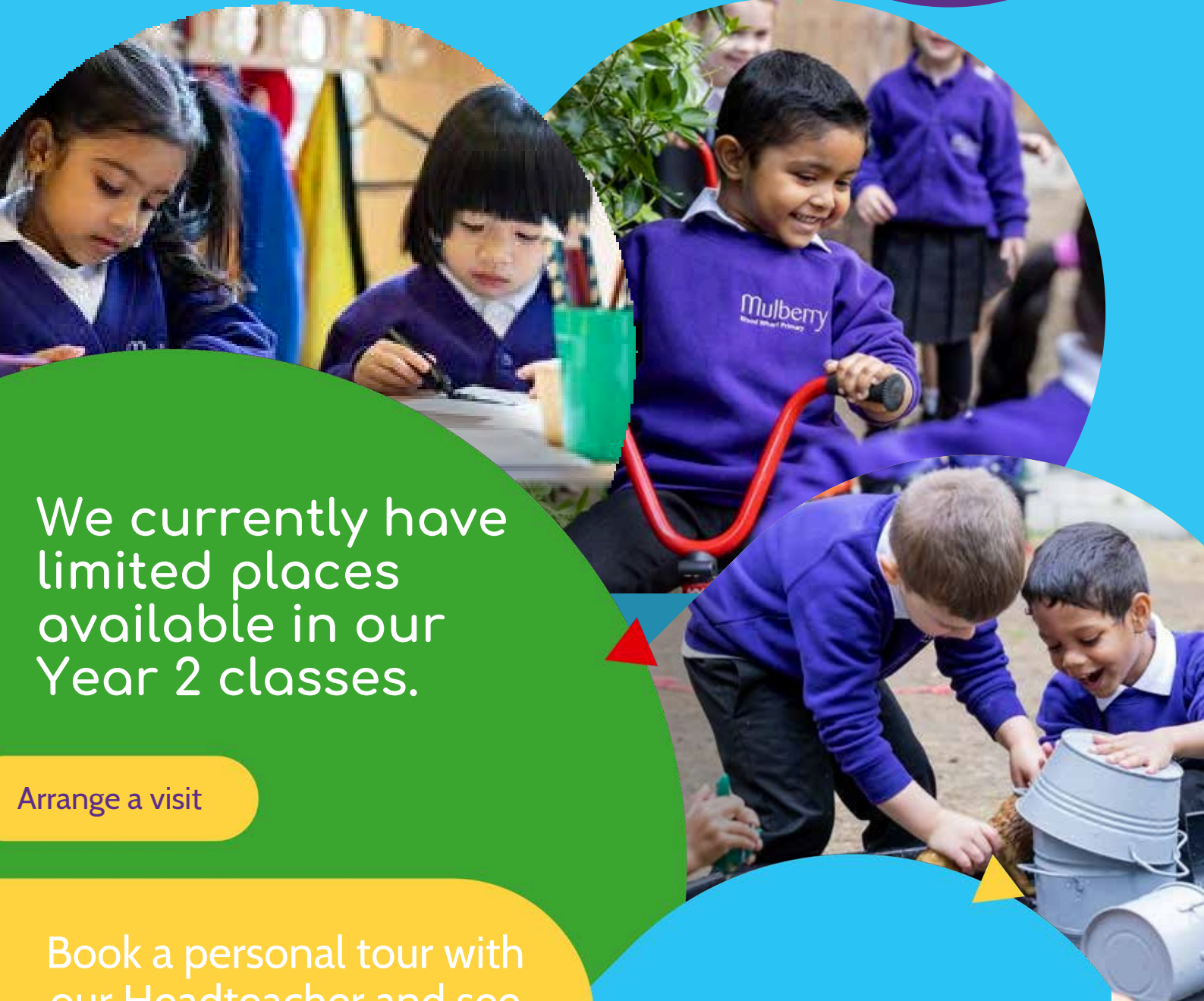
**APPLY NOW**



Spaces  
Available in  
Year 2

# Mulberry

Wood Wharf Primary



We currently have limited places available in our Year 2 classes.

Arrange a visit

Book a personal tour with our Headteacher and see our school in action.



Part of the  
**Mulberry**  
Schools Trust

updates

What snacks should I pack?

CLICK HERE

Mulberry  
Wood Wharf Primary

Daily snacks  
Children in Reception through to Year 2 take part in the National hot scheme, which means that a range of hot and vegetables are provided every day + treat in Reception classes are also provided some bread toast snacks with healthy spread.  
© Mulberry Wood Wharf

Healthy Lives Families  
Newsletter

[https://signup.es-  
mail.co.uk/Signup/d7ef81e9f  
0a6a2760e48c3610959fb34](https://signup.email.co.uk/Signup/d7ef81e9f0a6a2760e48c3610959fb34)



Top Performing  
Borough in London  
for Healthy Schools

CLICK HERE

Home Learning  
Opportunities

Link

[https://www.mulber  
rywoodwharf.org/p  
upils/mulberry-  
learn-2/#tab-id-7](https://www.mulberrywoodwharf.org/pupils/mulberry-learn-2/#tab-id-7)

At the Mulberry Schools Trust, we are proud to nurture ambition from the very start. Our newest publication, Going Places 2025, celebrates the incredible destinations achieved by our Sixth Form students – showing what's possible for every Mulberry child in the future. Read more and be inspired here:

CLICK HERE

<https://bit.ly/48i3GqH>

# PARTNERSHIP WITH Compass

We are pleased to share that Mulberry Wood Wharf Primary has partnered with [Compass Tower Hamlets](#) — a fantastic service supporting children, young people, and families with all aspects of health and wellbeing.

Compass offers guidance and support on a wide range of topics including:

- Oral health
- Sleep
- Mental health
- Body image
- Healthy eating
- Behaviour
- Parenting
- ...and much more!

Families can be referred by the school, but you can also self-refer directly. We encourage you to take a look at their website to find out more about the support available.



# YEARLY PLANNER

## MONTHLY NOTES

2025/2026

### September

- Meet the teacher  
08.09.25 - Yr 1- 3:45pm  
09.09.25 - Yr 2 - 3:45pm  
10.09.25 - Yr 3 - 3:45pm  
22.09.25 - Reception - 3:45pm
- Half term Curriculum letter
- Rosh Hashanah (Judaism) - 22th - 24th Sept
- Year 3 Reading workshop - 30th Sep (9:00am - 9:30am)
- Reception Tapestry Workshop TBC
- Coffee morning TBC

### October

- Black History Month
- Mid Autumn Festival-6thOct
- Photo day - 7th Oct
- Yr 3 Soanes Centretrip-8thOct
- World Mental HealthDay-10th Oct
- Flu Vaccination (allpupilseligible) - 17th Oct
- Trust twilight - 22ndOct(NOCLUBS)
- Halloween dress upday-24th Oct
- Diwali dress up day-20stOct
- Coffee Morning TBC

### November

- Bonfire Night - 5th Nov
- Half Term Curriculum Letter
- Anti- Bullying Week - 10th - 14th Nov
- Parents Evening - 11th - 12th Nov
- Remembrance Day - 11th Nov
- Festival of Arts - 13th Nov
- Road Safety Week - 17th - 21nd Nov
- Flu Vaccination - 21st Nov (All pupils eligible)
- Thanksgiving - 27th Nov

### December

- ChristmasAdvent Calendar on Website
- Music Concerts - 1st and 3rd Dance
- Show with Effy - 2nd Dec 2:00pm
- International Day of people with Disabilities - 3rd Dec
- Reception Nativity- 10th Dec (9:15-10:00am and 10:30- 11:15am)
- Carol Singing at JL - 2nd Dec
- Christmas Jumper Day - 12th Dec
- Christmas Show - 12th Dec
- Pantomime - 16th Dec
- Christmas Party Day - 19th Dec
- NO CLUBS From Mon 15th - Fri 19th Dec

### January

- Half Term Curriculum Letter
- EYFS Trip to Library - 12th /13th Jan
- Yr 3 Trip to Library - 14th Jan
- Martin Luther King Day - 19th Jan
- EYFS Trip to Soane Centre - 20th /21st
- Burns Night - 25th Jan
- Coffee Morning with TBC
- Yr 3 Trip to British Museum - 30th Jan

### February

- National Storytelling Week - 2nd - 6th Feb
- Storyteller - 2nd Feb
- Yr 3 Trip Art Exhib - 6th Feb (am)
- Yr 2 Trip to Half Moon Theatre - 6th Feb (pm)
- Children's Mental Health Day - 9th - 13th Feb
- Safer Internet Day - 10th Feb
- Chinese New Year 17th Feb
- Ramadan Starts - 18th Feb
- School Closed - INSET Day - 23rd Feb
- Year 1 Trip to Church - TBC

### March

- Holi Festival - 4<sup>th</sup> March
- World Book Day - 6th March
- International Women's Day - 8th March
- British Science Week - 9th -13th March
- Stem Day - 10th March
- Cosy Read and Meet the Author - 11th March
- St Patricks Day - 17th March
- Global recycling Day - 18th March
- Eid ul Fitr - School closed- 19/20th March
- EYFS Gingerbread Man Show - 26th March
- Eid Party - 27th March
- KS1 - Showcase spectacular - TBC
- NO CLUBS from - Mon 23rd - Fri 27th March
- School closes at 1:00pm - Fr 27th March

### April

- Easter Holiday - 30th March -10th April
- Parents Evening 28th - 29th April TBC
- Changing me parents meetings (Yr1 - Yr3) TBC

### May

- EYFS Trip to Half Moon TBC
- Eid ul Adha - 26th /27th May
- Dance Performance with Effy - 19th May

### June

- Phonics screening Check - 8th - 12th June
- Optional SAT's - 15th - 18th June
- Changing me unit taught
- Sports Day - 30th June

### July

- Musical Performance - 6th and 8th July TBC
- Reports handed out
- Reception Shoe Box workshop TBC
- Summer Show - 14th July (2 showings)
- School Fete 10th July
- Reception Graduation TBC
- Last Day of School (closes at 1:00pm) - 17th July
- NO CLUBS from Mon 13th - Fri 17th July

### Weekly

- Newsletter - Fridays
- PE Days - Every Tuesday and Thursday
- Friday Celebration Assemblies (parents are invited)

Please note that the calendar is subject to change throughout the year.